

Term Series Investment Pools

Pooled investments with a fixed rate of return and fixed maturity date

KEY FEATURES OF TERM SERIES

- Invests in high-quality, short-term instruments
- Comprised of statute allowable investments
- A fixed rate of return
- A fixed maturity date

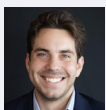
CLIENT SERVICE TEAM



Lisa Nusko
VP, Investment Services
630.657.6527
lisa.nusko@ptma.com



Greg Sotiros
VP, Investment Services
630.657.6424
greg.sotiros@ptma.com



Ben Carney
Associate Relationship
Manager
630.657.6528
ben.carney@ptma.com



Patrick Struttman
Associate Relationship
Manager
630.657.6534
patrick.struttman@ptma.com

About the Term Series product

Term Series Investment Pools are pooled investment vehicles comprised of statute allowable investments, and offer investors a fixed rate of return and fixed maturity date. Each Term Series has a designated maturity between 30 days and 3 years. These fixed characteristics differ from other series of IPRIME, which offer fluctuating rates of return and no fixed maturity date. Participants may want to consider Term Series investments to meet a specific cash flow or investment need in their portfolio.

Portfolio composition of a Term Series pool

Investment shares in a Term Series represent a beneficial interest in the underlying instruments in the pool. The eligible investments in each pool may include bank deposit products, government securities, and municipal securities. Term Series may invest in interest-bearing certificates of deposit, interest-bearing time deposits or any other investments that are direct obligations of a bank that are permitted by applicable Illinois law. The deposits held by any Term Series will either be insured by the FDIC up to the maximum amount of such insurance or fully collateralized by pledged securities or letters of credit provided by Federal Home Loan Banks for amounts in excess of FDIC insurance. Each Term Series Pool is unique and independent of all other Term Series Pools. Thus, Participants should make sure that the specific Term Series Pool they are considering meets their individual investment criteria and objectives. Information regarding any investments or collateral for a Term Series' portfolio will be provided to the investors in that Series by the Operational Manager or Distributor upon request.

Making investments in Term Series pools

Participants can contact IPRIME to obtain additional information about the availability of Term Series Investment Pools. It is anticipated that new pools will be created on a regular basis with varying maturity dates. Participants may purchase Term Series Pool shares by redeeming shares in their current share class accounts.



844.547.7463 | www.iprimetrust.org

The information presented should not be used in making any investment decisions and is not a recommendation to buy, sell, implement, or change any securities or investment strategy, function, or process. Any financial and/or investment decision should be made only after considerable research, consideration, and involvement with an experienced professional engaged for the specific purpose. Many factors affect performance including changes in market conditions and interest rates and in response to economic, political, or financial developments. Investment involves risk including the possible loss of principal. No assurance can be given that the performance objectives of a given strategy will be achieved. PTMA is not a bank, and an investment with PTMA is not insured by the Federal Deposit Insurance Corporation or any other government agency. Past performance is not an indication of future performance. Any financial and/or investment decision may incur losses. Public Trust Advisors, LLC, PMA Financial Network, LLC, PMA Securities, LLC and PMA Asset Management, LLC (collectively "PTMA") are under common ownership. Public Trust Advisors, LLC and PMA Asset Management, LLC, are both SEC registered investment advisers. PMA Securities is a broker-dealer and municipal advisor registered with the SEC and MSRB and is a member of FINRA and SIPC. Registration with the SEC does not imply a certain level of skill or training. Marketing, securities, institutional brokerage services and municipal advisory services are offered through PMA Securities, LLC. Public Trust Advisors and PMA Asset Management provide investment advisory services primarily to local government investment pools ("Funds") and separate accounts. All other products are provided by PTMA Financial Solutions.